

HEALTHCARE GLOSSARY

Serialization Terms for Hospitals and Pharmacies



Introduction

In 2020, DSCSA requires that hospitals and pharmacies receive drugs with unique product identifiers as part of the FDA’s broader track-and-trace regulations. In fact, as of 2017, pharmacies are already seeing packaging with new 2D barcodes and serial numbers—and they are seeing a lot of unfamiliar terms with origins in manufacturing, supply chain logistics, regulatory guidelines, information technology, and industry standards.

Acronyms like “GTIN” and “EPCIS” are likely to become more familiar to hospitals and pharmacies as serialized product starts to appear on pharmacy shelves. Terms like “transaction” and “illegitimate product” have specific FDA definitions that are part of a broader compliance vocabulary. This collection of more than 100 terms will help you make sense of the changing landscape of healthcare delivery and make smart decisions as you plan your serialization strategy.

A B C D E F G H I J K L M N O P Q R S T U V W X Y Z

#

3PL

Third-Party Logistics. A contracted company that provides distribution services of finished goods on behalf of another company. A 3PL never takes ownership of the product although the product is in its possession.

A

ADR

Authorized Distributor of Record. A wholesale distributor that a manufacturer designates or authorizes to distribute its products.

Aggregation

The process of recording the serial number of a container along with the serial numbers of its contents; often referred to as a parent/child relationship, or a serialized container to content relationship.

Alphanumeric

Character set made up of digits and letters of the alphabet.

ASN

Advance Ship Notice, the common name for the EDI 856 transaction. A notification of pending deliveries, usually in an electronic format.

Authenticate

The practice of checking a unique identifier against a set of captured serialized data to determine its authenticity.

B**B2B**

Business-to-Business. Interactions that support the transfer of standardized interchange files up to an enterprise's **EDI** system. B2B interactions are not integrated with manufacturing, warehouse, or other backend business systems.

Batch

A group of products, usually associated by a manufacturing or packaging operation. Also referred to as a lot.

BoL

Bill of Lading. A document issued by a carrier which details a shipment of merchandise and gives title of that shipment to a specified party.

Bundle

A group of items held together, usually by shrink wrap. See also **Inner Pack**.

C**Case**

A container of product cartons which may or may not be bundled.

CBV

Core Business Vocabulary. Vocabulary elements agreed upon by trading partners who will exchange data.

Example: For serialization, the **GS1** standards organization publishes a CBV for **EPCIS** event data exchange (More at www.gs1.org/epcis).

Check Digit

Redundancy check used for error detection of identification numbers. Used in **NDCs**, **DEA numbers**, **GTIN-14** identifiers, and **SSCCs**, for example.

CMO

Contract Manufacturing Organization. A company providing manufacturing, and sometimes packaging, services for one or more companies based on contracts or service agreements. Also referred to as a Contract Packaging Organization (CPO) or Third Party Manufacturer (TPM).

Commission

Process of associating a unique identifier to a particular object (product, shipment, asset, or container).

Counterfeit

An imitation usually created with the intent of fraudulently passing it off as genuine, often to take advantage of the established worth of the imitated product. The word counterfeit frequently describes the forgeries of currency and documents, and the imitations of clothing, software, pharmaceuticals, jeans, watches, electronics, and company logos and brands. In the case of goods, it results in patent infringement or trademark infringement.

CPO

Contract Packaging Organization. A third-party organization that manufacturers will subcontract to package their product.

CSV

Comma Separated Values. A common data exchange format stored in a tabular format. CSV files can be opened in spreadsheet programs.

CVM

The U.S. Center of Veterinary Medicine. The U.S. [DSCSA](#) regulates some products that are administered by veterinarians but can also be consumed by humans.

D

Data Carrier

A [GS1](#) term for the different kinds of media, such as barcodes, that can hold GS1 identification keys and application identifiers.

DC

Distribution Center. A warehouse stocked with goods to be redistributed to retailers, wholesalers, or customers.

DEA Number

A registration number assigned to an entity that is authorized by the U.S. Drug Enforcement Administration to manufacture, distribute, research, prescribe, or dispense a controlled substance. DEAs are used to track controlled substances and a valid DEA number consists of two letters, six numbers, and a check digit. The first letter identifies the type of registrant, and the second letter is the first letter of the registrant's last name.

Decommission

The process of removing a unique identifier from a product or container so it is no longer tracked. Unlike the business process known as destroying, the item may still physically exist after decommissioning even though it no longer carries serialized identification.



Destroy

In instances where a product or container no longer exists, the process of removing a unique identifier from that item so it is no longer tracked.

Disaggregation

Removing products or containers from their associated parent container. The serial numbers of the contained items are no longer associated as children of the parent container.

Dispenser

A retail pharmacy, hospital pharmacy, group of chain pharmacies, or any other person authorized by law to dispense or administer prescription drugs. Under [DSCSA](#), an entity is not considered a dispenser if it acts as a wholesale distributor or dispenses products only used for animals.

Disposition

The state of a serial number, such as commissioned or decommissioned.

Downstream

The direction in which product flows in a supply chain. Generally speaking, pharmaceutical products flow, and transactions occur, through the supply chain from manufacturers, to repackagers, to wholesale distributors, to dispensers.

DQSA

The Drug Quality and Security Act. U.S. Federal legislation passed in November 2013. [DSCSA](#) is a section of DQSA.

DSCSA

The Drug Supply Chain Security Act, which is Title II of [DQSA](#). DSCSA mandates a full supply chain traceability system from pharmaceutical manufacturer to pharmacy dispenser for prescription drugs being distributed in the United States. The law was signed by President Obama in November 2013, providing a national standard for drug security and replacing the patchwork of state-level [Pedigree](#) regulations that were in place.

DUNS (D-U-N-S) Number

A unique nine-digit identifier assigned and maintained by Dun and Bradstreet (D&B) to identify business entities on a location-specific basis.

DUNS+4

A [DUNS](#) number plus a 4-digit extension (13 digits total) created by entities that have been assigned DUNS numbers, if they need more than one bank/Electronic Funds Transfer (EFT) account for a location. Dun & Bradstreet does not create or maintain the +4 number.

E

Each

An individual saleable unit entering the supply chain, such as a finished goods bottle or unit carton.

EDI

Electronic Data Interchange. The electronic transfer of data between computer systems in a standardized message format.

EPC

Electronic Product Code. A unique number that identifies a specific item in the supply chain. Also known as a [serial number](#).

EPCglobal

The organization developing standards for the Electronic Product Code ([EPC](#)), and for [RFID](#) systems to store and manage EPCs. EPCglobal is sponsored by [GS1](#).

EPCIS

Electronic Product Code Information Services. A [GS1 EPCglobal](#) standard designed to enable EPC-related data-sharing within and across enterprises. This data-sharing is aimed at enabling participants in the EPCglobal Network to obtain a common view of the disposition of EPC-bearing objects within a business context. (More at www.gs1.org/epcis).

ERP

An Enterprise Resource Planning system. Business process management software used to manage and automate back-office operations.

Exclusive Distributor

A wholesale distributor that purchases directly from a manufacturer and is the sole distributor of that manufacturer's product.

Expiry

Date of expiration for an item, or the last day the item should be used.

Extension Digit

A one-digit segment used to extend the serial reference segment of an [SSCC](#) identifier.

External Product Identifier

A standards-based product code, such as a Global Trade Item Number ([GTIN](#)), or a market-specific product code used to identify the product in the external supply chain. This is specifically not a manufacturer [SKU](#), which is not regulated or standardized.



G

GCP

Global Company Prefix. A globally unique code that is used to represent a location in identifiers. See also [GS1 Company Prefix](#).

GLN

Global Location Number. A unique 13-digit number containing a [GS1](#) company prefix, a location reference, and a check digit, used to uniquely identify a physical location or legal entity in the supply chain. The [GLN](#) makes possible the unique and unambiguous identification of those locations and entities.

Global Identifier

A unique reference number used to identify a legal entity such as a company or location, to support the secure exchange of business information on the Internet.

Grandfathering

A provision in which some pre-existing situations are not subject to a new rule or regulations.



GS1

A leading global organization dedicated to the design and implementation of global standards and solutions, to improve the efficiency and visibility of supply and demand chains globally and across sectors. The GS1 system of standards is the most widely used supply chain standards system in the world. (More at www.gs1.com).

GS1-128

A linear barcode, formerly referred to as a Code-128 barcode. Usage is granted to organization members of [GS1](#).

GS1 Company Prefix

A globally unique identifier for a company, assigned and administered by GS1 Global. The GS1 Company Prefix is 4 to 12 digits, and is a component of [GLN](#), [GTIN](#), and [SSCC](#) identifiers.

GS1 Datamatrix

A two-dimensional matrix barcode consisting of black and white “cells” or modules arranged in either a square or rectangular pattern. The information to be encoded can be text or raw data. Usage is granted to organization members of [GS1](#).

GTIN

Global Trade Item Number. An identifier for trade items, developed by [GS1](#). Such identifiers are used to look up product information in a database, often by inputting the number via a barcode scanner pointed at an actual product. The uniqueness and universality of the identifier is useful in establishing which product in one database corresponds to which product in another database, especially across organizational boundaries. Usage is granted to organization members of [GS1](#).

GxP

Good Practice. A general term, usually referring to quality and regulations. For example, GMP is “Good Manufacturing Practice” and GCP is “Good Clinical Practice.”

H

HDA (formerly HDMA)

Healthcare Distribution Alliance (formerly the Healthcare Distribution Management Association). The national association in the U.S. representing primary, full-service healthcare distributors. HDA member companies deliver more than nine million prescription medicines and healthcare products to more than 165,000 settings including chain and community pharmacies, hospitals, nursing homes, physician offices, and clinics in every state and territory.

Header (for Human Readable Interpretation)

Headers comprise the prefixes used in Human Readable Interpretation of variable data. Common headers include [GS1](#) Application Identifiers (AIs) or GS1 recommended field labels.

HIN

The Health Industry Number. A nine-character [alphanumeric](#) unique identifier that is assigned to every facility, delivery location, and business activity in the healthcare supply chain. The first seven positions comprise the “base HIN,” which identifies a healthcare entity at a particular location.

HRI

Human Readable Interpretation. Characters, such as letters and numbers, which can be read by people and are encoded in data carriers. HRI is a one-to-one illustration of the encoded data.



Illegitimate Product

Defined by the FDA as a product for which credible evidence shows that it (a) is counterfeit, diverted, or stolen, (b) is intentionally adulterated such that the product would result in serious adverse health consequences or death to humans, (c) is the subject of a fraudulent transaction, or (d) appears otherwise unfit for distribution such that the product would be reasonably likely to result in serious adverse health consequences or death to humans.

Inference

The technique of assuming the serial numbers within a sealed container based on previous observation, and not by directly reading each serial number. Inference is accomplished using data systems or documents (see [Pedigree](#)) and is controlled through validated procedures.

Inner Pack

A group of items (see [Bundle](#)) held together, usually by shrink wrap.

Inspection

The process of reviewing an item, either manually or using automated systems.

Interoperability

The ability of technology systems and software to communicate, exchange data and/or information, and make use of the information that's been exchanged.

Item

The product secondary package level, typically a carton. Also referred to as the [smallest saleable unit](#).

A blue circle containing the letter 'J' in a blue serif font.A blue circle containing the letter 'K' in a blue serif font.A blue circle containing the letter 'L' in a blue serif font.A blue circle containing the letter 'M' in a blue serif font.

Manufacturer

An entity or organization responsible for packaging of the product.

Master Data

Data representing a company's details, global identifiers, products, and trading partners. Particular types of data are required for serialization and global compliance reporting.

N

NDC

National Drug Code. A unique 10-digit product identifier for human drugs in the U.S. which represents the labeler or vendor, the product, and the package size. Some government agencies have adopted 11-digit NDCs by padding the identifier with leading zeros.

O

P

Pack Marking

Comprises the data and process for printing on primary and secondary product packaging.

Packaging and Labeling

Generally, related to the physical material, artwork, and printing that's used with all levels of product and logistics containers.

Pallet

A flat transport structure (sometimes called a skid) that supports goods in a stable fashion while being lifted by a forklift, pallet jack, front loader, or other jacking device. A pallet is the structural foundation of a unit load, which allows handling and storage efficiencies. Goods or shipping containers are often placed on a pallet secured with strapping, stretch wrap, or shrink wrap, and then shipped.

Pedigree

A certified record that contains information about each distribution of a prescription drug. It records the sale of an item by a manufacturer, any acquisitions and sales by wholesalers or repackagers, and final sale to a pharmacy or other entity administering or dispensing the drug. The process generally begins with the serialization of a product, and then continues through the supply chain as the product is received by each trading partner.

Picking

The process of collecting articles in a warehouse to fulfill a customer order.

Primary Package

Primary containment system in which the product is sterilized (excluding shelf cartons and shipping containers) that protects the contents to the intended level over a specific period of time.

Product Code

A unique identifier assigned to each finished manufactured product that is ready to be marketed or sold. Also known as Universal Product Code, a common barcode used to identify packaged products.



R

Recall

The removal of a drug product from the market. In the U.S., recalls fall under three classifications: Class I is for those products that can probably lead to adverse health effects or death; Class II is for drugs that can cause temporary or reversible health effects; and Class III relates to instances where the drug is not likely to cause adverse health effects.

RFID

Radio-Frequency Identification. The use of an object, typically referred to as an RFID tag, applied to or incorporated into a product, animal, or person, for the purpose of identification and tracking using radio waves.



Segment

Part of a market or industry. The pharmaceutical supply chain includes segments such as manufacturer, wholesaler, dispenser, Contract Manufacturing Organization (**CMO**), Third-Party Logistics (**3PL**) companies, and repackagers (also known as Third-Party Packagers or 3PPs).

Serial Number

Typically a portion or component of a Unique Identifier (**UID**) which provides uniqueness. Also known as a serial reference.

SGLN

Serialized Global Location Number. A unique identifier to a physical location, such as a specific building or bin within a warehouse. The **GLN** is a **GS1** format; the SGLN is an **EPC** format and is represented in Uniform Resource Identifier format, for example: urn:epc:id:sgln:0030001.12345.400.

SGTIN

Serialized Global Trade Item Number. The combination of a Global Trade Identification Number (**GTIN**) and a serial number which uniquely identify an item.

SKU

Stock Keeping Unit. Specifies a distinct type of item for sale. SKUs are not regulated or standardized, and thus are not used for serialization.

Smallest Saleable Unit

Each individual package of drug product, also known as the primary package level. The sealed homogeneous case in which smallest saleable units are packaged is the secondary package level.

SNDC

Serialized National Drug Code. The accepted format of unique identifier (**UID**) as defined by the U.S. FDA for serialization of U.S. marketed products. The SNDC is comprised of the **NDC** plus a serial number.

SNI

Standardized Numerical Identifier. A standard identifier affixed to a prescription drug package.

SOAP

Simple Object Access Protocol. A messaging protocol for exchanging structured (XML) information in the implementation of web services.

SOR

System of Record. An information storage system that is the authoritative data source for a given data element or piece of information.

SSCC

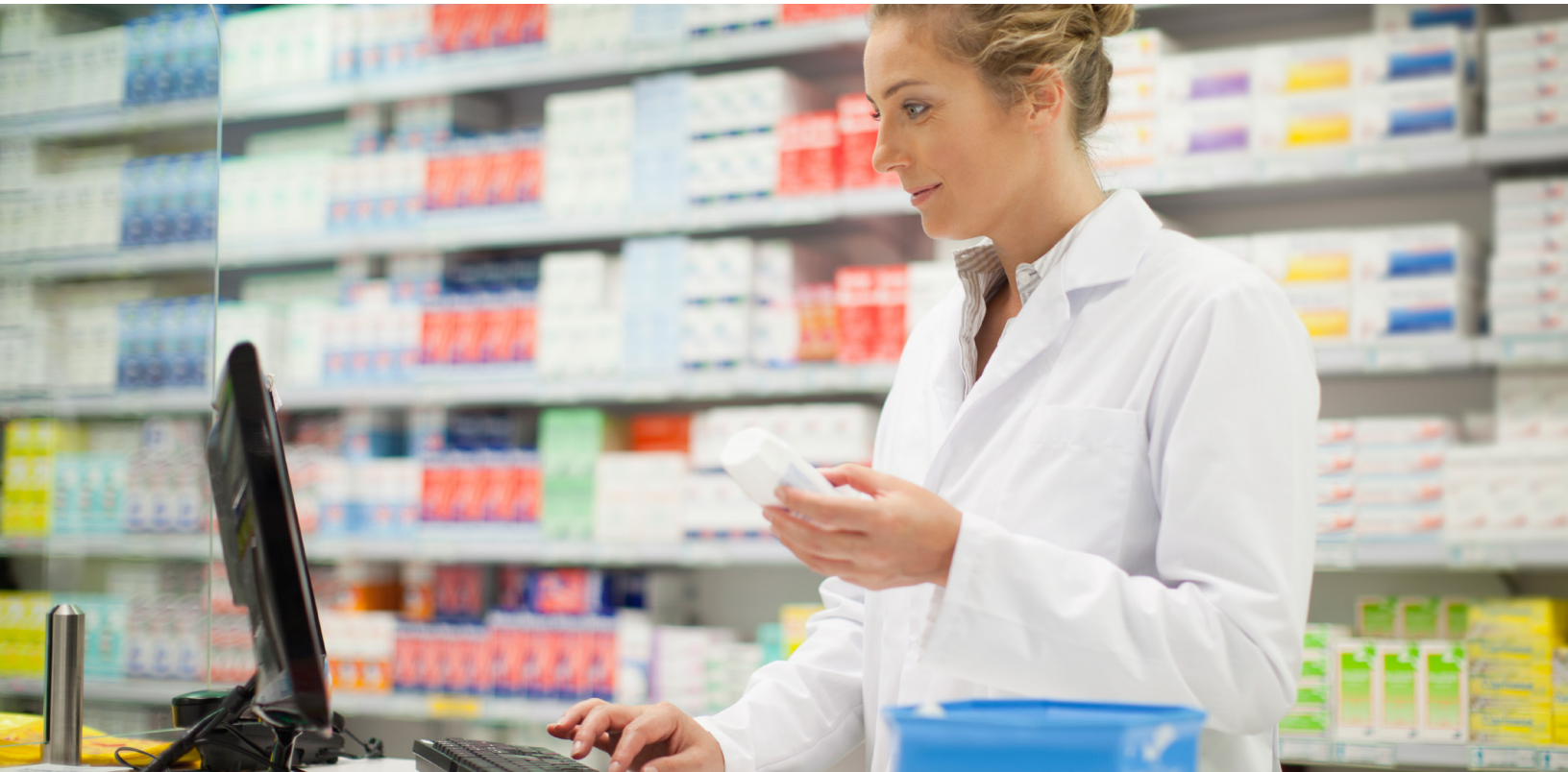
Serial Shipping Container Code. A [GS1](#) standard used in logistic encoding and communications. The SSCC ensures that logistic units are identified with a number that is unique worldwide.

SSO

Single Sign On. A session and user authentication service that allows software system users to log in with a single username and password, to access connected systems without using different usernames and passwords.

Synchronous Processing

Type of processing that provides an immediate response to a query. [SOAP](#) and REST web services provide synchronous processing.





T3

Under [DSCSA](#), the combination of Transaction Information ([TI](#)), Transaction History ([TH](#)), and the Transaction Statement ([TS](#)) for a drug product as it moves through the drug supply chain.

TH

Transaction History. A record of [transaction](#) information for each change of ownership within the supply chain, starting with the manufacturer.

THS

Transaction Histories. Documentation for [transaction](#) exchanges of multiple products, including (for each product) all three transaction documentation components: [TI](#), [TH](#), and [TS](#).

TI

Transaction Information. A comprehensive set of details about each product included in a [transaction](#), including product name, National Drug Code ([NDC](#)) number, strength and dosage form, size and number of containers, lot number, date of transaction, and the names of the companies involved in the transaction.

TPM

Third-Party Manufacturer. A company contracted to manufacture drug product for a brand owner. Also referred to as a contract manufacturer, Contract Manufacturing Organization ([CMO](#)), or Third-Party Packager (3PP).

TPO

Third-Party Organization. Term used to refer to any [TPM](#), [3PL](#), [CMO](#), or other externally contracted organization.

Transaction

As defined by [DSCSA](#), the transfer of product where a change of ownership occurs. Exemptions: intercompany distributions, distribution among hospitals under common control, public health emergencies, dispensed pursuant to a prescription, product sample distribution, blood and blood components for transfusion, minimal quantities by a licensed pharmacy to a licensed practitioner, charitable organizations, distributions pursuant to a merger or sale, certain combination products, certain medical kits, certain IV products, medical gas distribution, and approved animal drugs.

TS

Transaction Statement. A statement confirming that trading partners are authorized by law to transfer ownership of product, have received [transaction](#) documentation, have systems in place to comply with verification requirements, and did not knowingly ship suspect product or provide false information.

Track and Trace

The process of tracking drugs through the supply chain using serialization data. Track and trace systems begin with serialization but generally include additional components such as product tracing or tracking, verification, and/or reporting.



U

UID

Unique Identifier. A string of numbers and characters that is unique within a given system. Examples include [GS1](#), [GTIN](#), and GS1 [SSCC](#) identifiers.

UPC

Uniform Product Code. The U.S. standard article number. A form of [GTIN](#) data carrier or barcode.

Upstream

The opposite direction that product normally flows in a supply chain; moving back up the supply chain. Generally speaking, the pharmaceutical product flows, and transactions occur, through the supply chain from manufacturers, to repackagers, to wholesaler distributors, and to dispensers.

User

An entity, individual, or organization responsible for making use of product, process, or systems.



Validation

Documented procedure for obtaining, recording, and interpreting the results required to establish that a process will consistently yield product complying with predetermined specifications.

VAN

Value Added Network. A hosted service offering that acts as an intermediary between business partners sharing standards-based or proprietary data, via shared business processes.

VAWD

Verified-Accredited Wholesale Distributors. An accreditation for pharmaceutical wholesale distribution facilities. Wholesale distributors that achieve accreditation are in compliance with state and federal laws, and the U.S. National Association of Boards of Pharmacy's VAWD criteria.



Wholesale Distributor

A company that distributes drugs to an entity other than a consumer or patient.

WMS

Warehouse Management System. A software application that supports the day-to-day operations within a warehouse. A WMS enables centralized management of tasks such as tracking inventory levels and stock locations.

WSDL

Web Service Definition Language. An XML-based interface used to describe the functionality of a web service.

X

XSD

XML Schema Definition. Describes the structure of an XML document.

Y

Z

[Contact us to request a free consultation with a serialization expert.](#)

© 2018 TraceLink Inc. All rights reserved.

