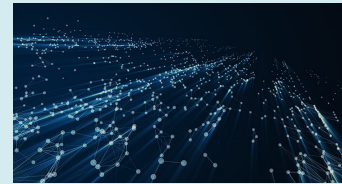




TRACELINK UNIVERSITY

Home
Resources
TraceLink University

Use Case: Custom Transforms



blue

Custom Transforms

TraceLink's out-of-the-box Multienterprise Information Network Tower (MINT) solution streamlines the exchange of digital business transactions, such as purchase orders, invoices, and advance ship notices, through a Business-to-Network Integrate-Once™ approach. A seamless data exchange between businesses and their trade partners is achieved through standard transforms that map the data from standard Electronic Data Interchange (EDI) formats to TraceLink's required format, called canonicals. The canonical data model allows information to be exchanged with any partner on the network, regardless of their data format. While most use cases are covered by MINT, some may require your company to build a custom transform. Custom transforms allow you to map data, in any format, with TraceLink canonicals so it can be recognized and used by TraceLink products.

WORK IN ANY FORMAT: Regardless of data format, custom transforms enable mapping, using JavaScript or Contivo, to the canonical format necessary for interaction with TraceLink products.



SEAMLESSLY INTEGRATE: Integrate data from diverse sources, ensuring that all information is available in one, cohesive system.

`<?xml version="1.0" encoding="UTF-8"?>`

CUSTOMIZE DATA MAPS: Defining your data maps provides control over its transformation and utilization.

Consider the questions below to determine if your business requires a custom transform.



1. Does the data schema follow an IDOC, EDIFACT, or EDI **industry standard format**, without modifications? You can determine this by expanding the elements processed by tracelink on the linked page for each transaction type.
2. If your data schema does follow an industry standard format, **TraceLink's MINT solution** covers your use case and you do not need a custom transform. To get started, please contact your sales representative.
3. If your data does not follow an industry standard format or has modifications, can the varying field(s) be mapped to an existing field in the associated canonical? You can view canonical fields **here**.
4. If the data can be mapped to an existing field, proceed with this guide. If the field cannot be mapped and changes need to be made to the canonical, please contact us at partner-operations [at] tracelink.com (partner-operations[at]tracelink[dot]com).

Related Content



Custom Transforms Development Guide

Walkthrough of how to create your own custom transforms.

[View More](#)