



## NEWSROOM

**Home**

**About**

**Newsroom**

# CHEPLAPHARM to Accelerate Global Supply Chain Digitalization with TraceLink MINT



*The German pharmaceutical company unifies its digital partner network, laying the foundation for AI-driven supply chain orchestration*

**BOSTON, Mass. — May 14, 2026** — TraceLink, the world’s largest Agentic Business Network, today announced that the German-based but globally active CHEPLAPHARM Group, a world leader in the acquisition of original preparations from the research-based pharmaceutical industry, is going live on the TraceLink network with [Multienterprise Information Network Tower \(MINT\)](#), powered by [Orchestration Platform for Universal Solutions \(OPUS\)](#).

### **Unified Digital Operations Through MINT**

As CHEPLAPHARM expanded its portfolio and global trading partner network through ongoing acquisitions, the company recognized the need to standardize and automate supply chain operations. Core processes—such as purchase order confirmations, delivery date updates, and shipment notifications—were handled manually through emails and non-standardized documents like PDFs and Excel sheets, creating additional administrative workload.

By implementing MINT, CHEPLAPHARM will be able to exchange mission-critical

data digitally and in real time between ERP systems, reducing manual effort, improving transparency, and enabling more efficient, scalable operations with its partners. This will mark a major step toward seamless, data-driven orchestration across CHEPLAPHARM's growing trading partner ecosystem.

“We reached a point in our growth where manual workflows were creating unnecessary delays and repeated work across both our organization and our partners' operations,” said Luise Daberkow, Senior Business Process Manager at CHEPLAPHARM. “By moving to TraceLink, we will eliminate time-consuming email chains and manual data entry, allowing our teams to focus on more strategic initiatives. We will have real-time operational visibility and agility to scale our business and partnerships in tandem.”

### **Accelerating Partner Onboarding Through a Single Link**

A key factor in CHEPLAPHARM's decision to implement TraceLink was the ability to onboard partners rapidly and at no cost to them. Unlike traditional point-to-point integration models that require building and maintaining separate connections for every trading partner, TraceLink's B2N Integrate-Once™ model allows CHEPLAPHARM and its trading partners to link a single time to the network, with no subscription or setup fees for CHEPLAPHARM's partners. This model will eliminate the need to rebuild interfaces each time a new partner joins, helping reduce the cost, effort, and friction of digitalizing transactions and processes across trading partners, while reducing IT workload and integration complexity.

### **IT Team-Backed Digitalization Reduces Complexity and Boosts Operational Resilience**

Acting as a flexible orchestration layer between CHEPLAPHARM's SAP environment and the diverse ERP systems used by its global CMOs and suppliers, MINT allows seamless, standardized data exchange without requiring heavy customization or

system changes.

This standardized approach will not only ensure data integrity and GxP-compliant communication but also eliminate repeated validation cycles and regression testing typically required for point-to-point EDI connections. By reusing validated interfaces and minimizing the need for tailor-made integrations, the IT team will gain significant time savings, reduce reliance on external consultants, and improve long-term system scalability.

### **The Foundation for Agentic Orchestration**

With a strong foundation in automation and partner integration, CHEPLAPHARM is advancing its digitalization strategy to strengthen supply chain resilience and agility. This approach will not only enhance current operations but will also future-proof the company's MINT investment—creating the conditions to leverage emerging agent-based intelligence capabilities as they mature.

“CHEPLAPHARM is taking a forward-looking approach that not only improves operational efficiency but prepares for the next era of supply chain intelligence,” said Shabbir Dahod, President and CEO of TraceLink. “Network-based digitalization is the infrastructure on which agentic AI can deliver real, trusted, and responsible value across the life sciences supply chain.”

To learn how companies are building the digital foundation for agentic supply chain execution with TraceLink, visit [tracelink.com](https://tracelink.com).

### **About CHEPLAPHARM**

CHEPLAPHARM is a family-owned company with headquarters in Greifswald. For over 20 years, the company has been very successful in taking over well-known and well-established medicines from the research-based pharmaceutical industry and transferring them to an existing global network of partners for production and

distribution. In this way, CHEPLAPHARM ensures the continuous supply of these medicines to patients worldwide. In addition to its headquarters in Greifswald, CHEPLAPHARM operates further sites in France, Japan, Russia and Switzerland. The company employs about 800 people worldwide.

Subscribe to Agile Supply Chain Insights

Stay informed with the latest patient-centric agile supply chain thought leadership content.

### Related Content



### Devatis Goes Live on TraceLink MINT to Prepare for Agentic Order-to-Cash Operations

Devatis has gone live on TraceLink's Multienterprise Information Network Tower (MINT) to digitalize end-to-end order-to-cash operations. By replacing fragmented EDI integrations with an Integrate-Once™ model, the company is unifying transactions on a shared digital network—creating a consistent, real-time data flow and establishing the data, metadata, and knowledge foundation for TraceLink's no-code AI agents to operate as governed users across its supply chain.

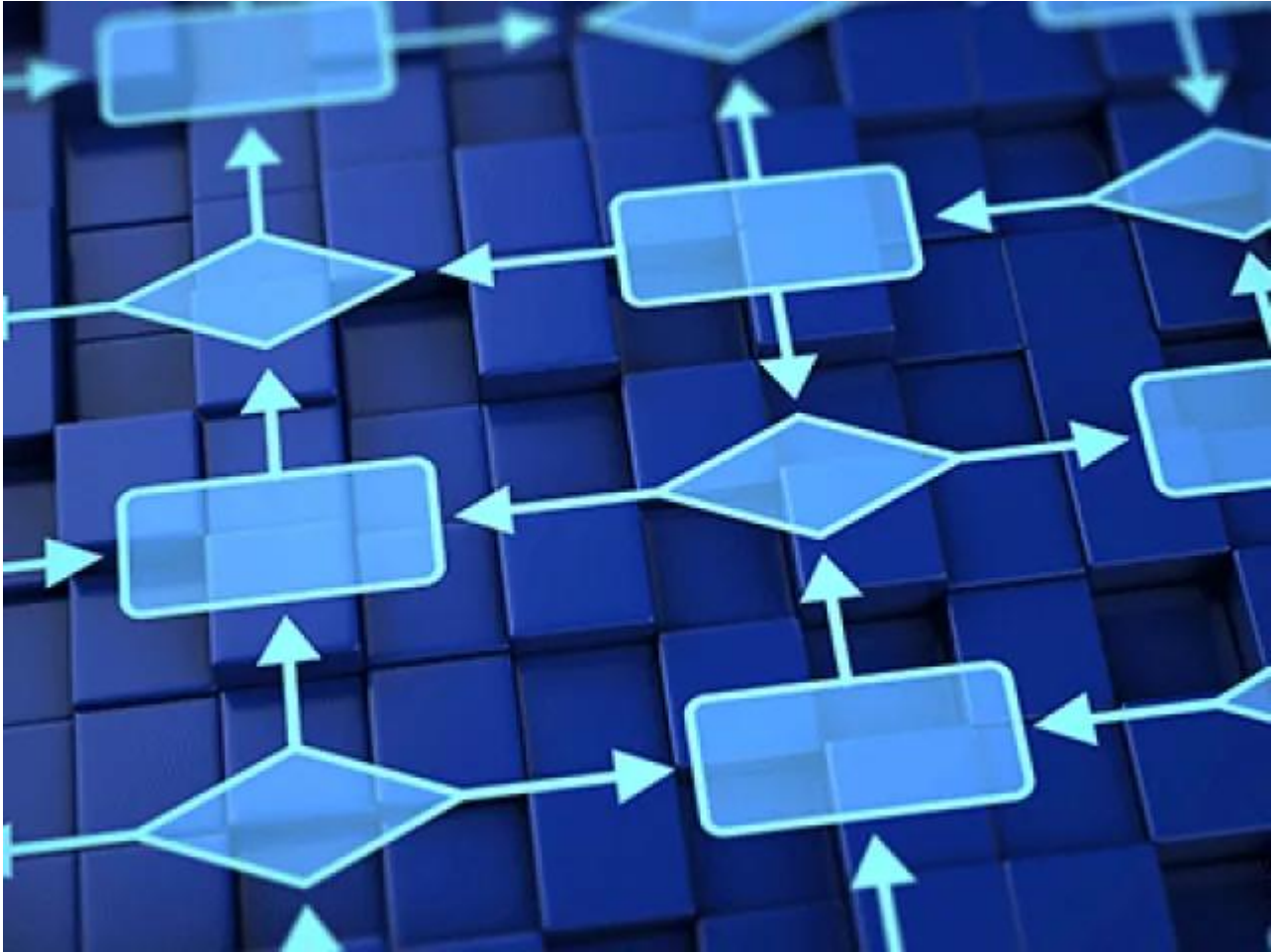
[View More](#)



**Neuraxpharm Goes Live with TraceLink MINT to Standardize Real-Time Data Exchange Across Its Global Supply Chain Network**

TraceLink today announced that Neuraxpharm, a European specialty pharmaceutical company focused on the treatment of central nervous system (CNS) disorders, has gone live on the TraceLink network with Multienterprise Information Network Tower (MINT), powered by Orchestration Platform for Universal Solutions (OPUS).

**[View More](#)**



**CIT Srl Charts a Visionary Path in Supply Chain Digitalization with TraceLink’s Multienterprise Information Network Tower (MINT)**

TraceLink today announced that CIT Srl, a rapidly growing Contract Packaging Organization (CPO) based in the European Union, has selected TraceLink’s Multienterprise Information Network Tower (MINT).

**[View More](#)**